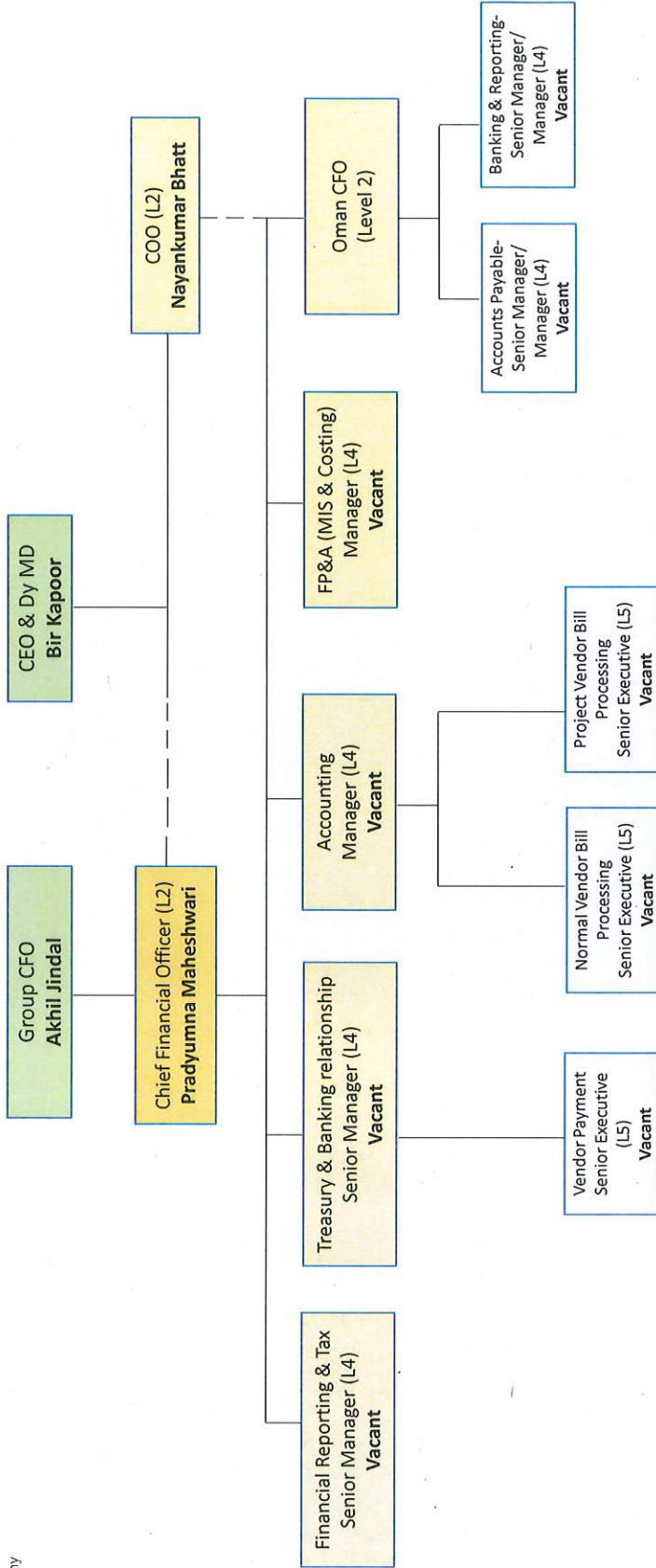


**GFCL EV Finance- Organogram**



*x Try use internal people as much as possible*

- InoxGFL Secretarial Function will continue to support GFCL EV and will work closely with GFCL EV CFO.

Initiated By: Ravi Shekhar <i>R Shekhar</i>	Checked by: Anand Mahale <i>Anand Mahale</i>	Rajiv Rao <i>Rajiv Rao</i> 25-Feb-26	Reviewed by: Kallol Chakraborty <i>Kallol Chakraborty</i>	Akhil Jindal <i>Akhil Jindal</i>	Approved by: <i>[Signature]</i> CEO
---	--	--	---	-------------------------------------	---

*\*4 comments on incorporated.*